

## No. 500: Automobile paint, polishing out encapsulated dust

---

### Description

Dust particles fall onto fresh paint when spraying vehicle bodywork. This results in small lumps on the surface resulting in a diffused reflection of light at these points. The dust encapsulation appears much larger than it actually is.

---

### Previous procedure

Sanding down the affected section of the vehicle and respraying. This procedure takes a lot of time and is expensive.

---

### Solution

Removal of unwanted dust encapsulation by spot surface sanding of the individual particles using a Festool Eccentric Sander ES 125 EQ and subsequent polishing with a Festool *ROTEX*<sup>®</sup>.

---

### Machinery/Accessories

- ES 125 EQ
- *ROTEX*<sup>®</sup> RO 150 E
- STF D 150 polishing pad
- STF D 150 polishing sponge (fine honeycombed)

Other accessories:

- STF D 125 sanding pad Festool Titan<sup>®</sup> 2 F 3000
- Festool MPA 8000
- Microfibre cloth

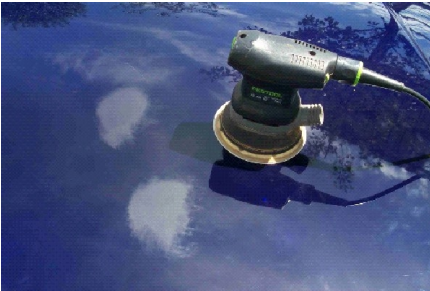
Alternative to ES 125 EQ:

- Spot sander Ø 36
- Self-adhesive sanding disc Ø 36 Festool Titan<sup>®</sup> 2 F 3000

Alternative to RO 150 E:

- RAP 150.03 E
- Pollux 180 E
- *ROTEX*<sup>®</sup> RO 125 FEQ
- See Polishing Machines Table as well

## Procedure for sanding down dust grains



1. Attach an F 3000 sanding disc to the ES 125 EQ. Set the machine's speed control to setting 1.
2. Sand the dust spot flat adding a few drops of water and liquid soap (wetting agent).
3. Wipe the surface clean with the green microfibre cloth. This creates a small, matt sanding area. Light refraction is still disturbed by the sanded surface after this and will appear dull/matt.

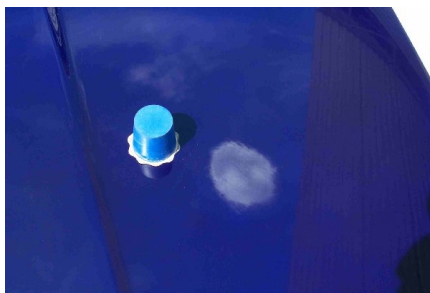


Fig. 500/2

Alternative to ES 125 EQ:  
Repeat the process by hand using a spot sander and appropriate self-adhesive sanding disc.

## Procedure for polishing the sanded area.



1. Set the side rotary button on the *ROTEX*<sup>®</sup> so that it is pointing to the front (coarse sanding) for *ROTEX*<sup>®</sup> rotary/eccentric motion.
2. Attach a polishing sponge, fine, honeycombed, to the polishing pad. Apply MPA 8000 polish to the polishing sponge.
3. To spread the polish, set the machine's speed control to setting 1. Accelerate the machine to speed level 4 – 6. Polish the sanded surface (resting machine flat on surface).
4. Wipe off dry polish residue using the grey microfibre cloth.

## NB:

The *ROTEX*<sup>®</sup> rotary/eccentric motion ensures an intensive polishing action and prevents the polish being spun out of the polishing area. The paint hardly warms up because of the low speed in comparison to angle polishers. In order to prevent the polish from being spun off when switching the machine, do not switch it on until it is resting on the surface to be polished.

## Polishing surrounding area

5. Set the side rotary button on the *ROTEX*<sup>®</sup> so that it is pointing to the front (coarse sanding) for *ROTEX*<sup>®</sup> rotary/eccentric motion.
6. Attach a polishing sponge, fine honeycombed, to the polishing pad. Apply MPA 8000 polish to the polishing sponge.
7. To spread the polish, set the machine's speed control to setting 1. Accelerate the machine to speed level 4 – 6. Polish the sanded surface (resting machine flat on surface).
8. Wipe off dry polish residue using the grey microfibre cloth.

## Important

- Polishing is no more than fine sanding. Polishes vary in aggressiveness depending on the manufacturer.
- Because of the heat sensitivity of the paint, we recommend that you do not carry out polishing work in direct sunlight.
- The area where polishing is being carried out should be protected from dust (to avoid scratching).

Polishing Machines Table				
	Area of use	Recommendation	Polishing pad Ø max.	Weight
<b>RO 150</b>	Universal use (sanding + polishing)	Non-dangerous to use (even for less experienced users)	150 mm	2.3 kg
<b>RAP 80</b>	Small surfaces (spot polishing)	For daily professional use	80 mm	1.6 kg
<b>RAP 150</b>	Universal use	For daily professional use	150mm	2.7 kg
<b>Pollux</b>	Ideal for medium to large areas	For daily professional use	180 mm	3.6 kg
<b>RO 125</b>	Universal use (sanding + polishing)	Non-dangerous to use (even for less experienced users)	125 mm	1.9 kg

Our sample applications are recommendations that have been tried and tested in practice. The various outline conditions, however, lie completely outside our area of influence. For this reason we are unable to provide any guarantee whatsoever. Legal claims against us cannot be derived from the contents hereof. Please observe without fail the safety and operating instructions included with the product.